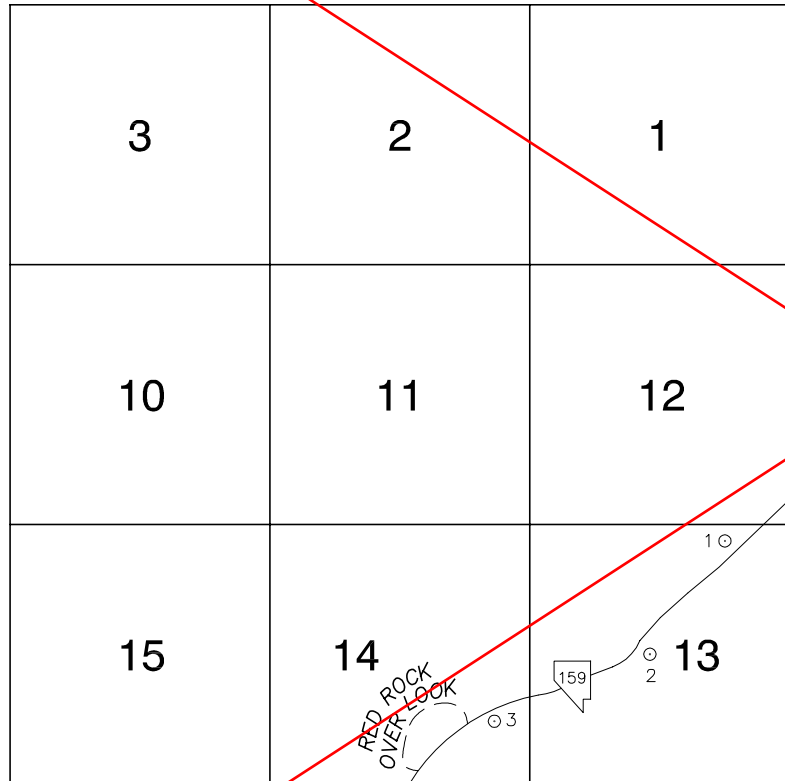


FOR REFERENCE ONLY

***2018 BENCHMARK NETWORK ADJUSTMENT SUPERSEDES THE 2003 BENCHMARK BOOK**

**Township 21 South, Range 58 East
Northeast Quarter**



NORTH AMERICAN VERTICAL
DATUM OF 1988
- ALL ELEVATIONS IN METERS -

No.	STATION	ELEVATION (METERS)	DESCRIPTION
1	8C18 13NNE6 1998	1132.311	F N D NDOT BRASS CAP IN CONCRETE, 50' NORTHWEST OF CENTERLINE OF STATE ROUTE 159, 1.3 MILES NORTHEAST OF REDROCK OVERLOOK, NDOT STATION E 545+89 PT.
2	8C18 13C4 1998	1125.789	F N D NDOT BRASS CAP IN CONCRETE, 50' SOUTHEAST OF CENTERLINE OF STATE ROUTE 159, 0.8 MILES NORTHEAST OF REDROCK OVERLOOK, NDOT STATION E 519+59.49 PT.
3	8C18 14SEE6 1998	1162.571	F N D NDOT BRASS CAP IN CONCRETE, 50' SOUTH OF CENTERLINE OF STATE ROUTE 159, 650' NORTHEAST OF RED ROCK OVERLOOK, NDOT STATION E 485+25.55 PT.
4			
5			
6			
7			
8			
9			
10			
11			

CLARK COUNTY VERTICAL CONTROL v.2003

CLARK COUNTY SURVEYOR'S OFFICE
5051 SOUTH PARADISE ROAD
LAS VEGAS, NEVADA 89119
(702) 455-0640

CONVERSION FACTOR:
METERS X $\left(\frac{3937}{1200}\right)$ = U.S. SURVEY FEET

REVISED 2003

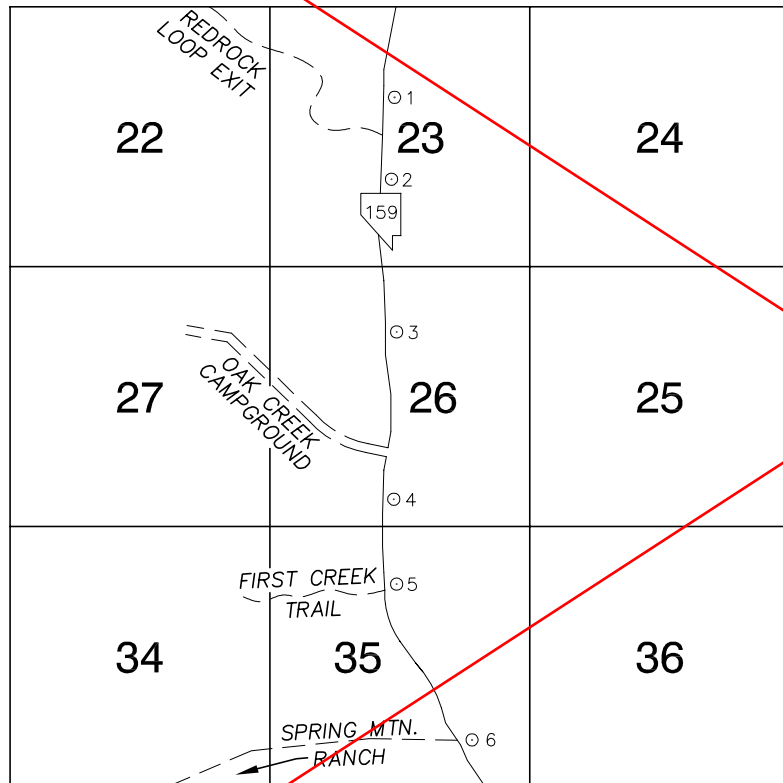
SHEET
1 of 1

**21-58
NE**

FOR REFERENCE ONLY

*2018 BENCHMARK NETWORK ADJUSTMENT SUPERSEDES THE 2003 BENCHMARK BOOK

Township 21 South, Range 58 East
Southeast Quarter



NORTH AMERICAN VERTICAL
DATUM OF 1988
- ALL ELEVATIONS IN METERS -

No.	STATION	ELEVATION (METERS)		DESCRIPTION
1	8C18 23N6 1998	1159.685	F N D	NDOT BRASS CAP IN CONCRETE, 50' EAST OF CENTERLINE OF STATE ROUTE 159, 600' NORTH OF RED ROCK SCENIC LOOP EXIT. NDOT STATION E1 458+55 PT.
2	8C18 23C4 1998	1176.222	F N D	NDOT BRASS CAP IN CONCRETE, 80' EAST OF CENTERLINE OF STATE ROUTE 159, 0.3 MILES SOUTH OF RED ROCK SCENIC LOOP EXIT. NDOT STATION E1 434+87.96 PC.
3	8C18 26N6 1998	1169.473	F N D	NDOT BRASS CAP IN CONCRETE, 50' EAST OF CENTERLINE OF STATE ROUTE 159, 0.5 MILES NORTH OF OAK CREEK CAMPGROUND. NDOT STATION E1 397+70 PC.
4	8C18 26S6 1998	1133.488	F N D	NDOT BRASS CAP IN CONCRETE, 50' EAST OF CENTERLINE OF STATE ROUTE 159, 800' SOUTH OF OAK CREEK CAMPGROUND. NDOT STATION E1 365+16 PT.
5	8C18 35N6 1998	1112.887	F N D	NDOT BRASS CAP IN CONCRETE, 50' EAST OF CENTERLINE OF STATE ROUTE 159, ACROSS FROM FIRST CREEK CANYON TRAIL. NDOT STATION E1 343+48.11 PT.
6	8C18 35SE6 1998	1097.184	F N D	NDOT BRASS CAP IN CONCRETE, 50' EAST OF CENTERLINE OF STATE ROUTE 159, ACROSS FROM SPRING MOUNTAIN RANCH ENTRANCE. NDOT STATION E1 312+12.21 PT.
7				
8				
9				
10				
11				

CLARK COUNTY VERTICAL CONTROL v.2003

CLARK COUNTY SURVEYOR'S OFFICE
5051 SOUTH PARADISE ROAD
LAS VEGAS, NEVADA 89119
(702) 455-0640

CONVERSION FACTOR:
METERS X $\left(\frac{3937}{1200}\right)$ = U.S. SURVEY FEET

REVISED 2003

SHEET
1 of 1

21-58
SE